

EV CHARGER INSTALLATION MANUAL

MECHANICAL

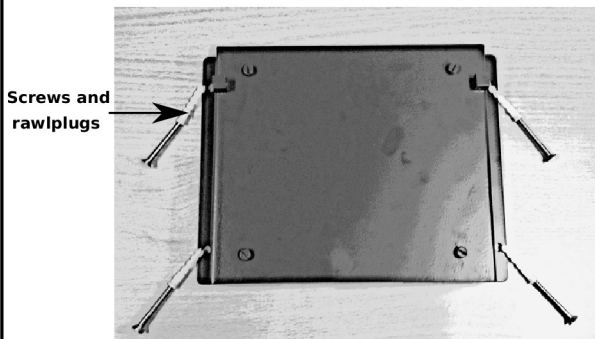
INTRODUCTION

The wall mounting section fits perfectly to the back plate of the EV charger made by WURTH. It offers a secure and stable infrastructure for smooth and convenient charging of the EV.

Two Allen screws are included for enhanced stability.

STEP1 :

Install the wall mounting plate in the desired location using the four 45x8 mm screws and accompanying rawlplugs.



STEP2 :

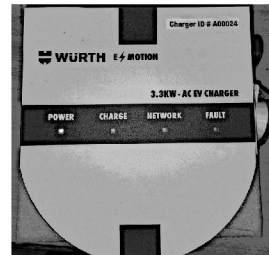
Place the hanging section of the EV charging unit's back plate exactly on the 4 hang screws (1 to 4), permanently fixed on the wall mounting plate.



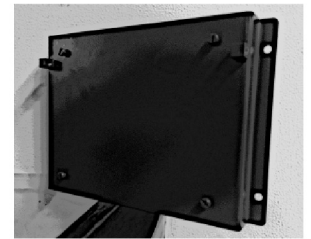
Wall Mounting Plate

EV Charger Hanging Section

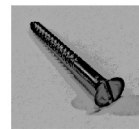
LIST OF PARTS



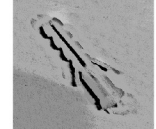
EV Charging Unit
(QTY : 1)



Wall Mounting Plate
(QTY : 1)



45x8 mm Flat Head Minus Screws
(QTY : 4)



3x10 mm Rawlplugs
(QTY : 4)



25x4 mm Allen Screws
(QTY : 2)



5/64 Allen Key
(QTY : 1)

STEP3 :

Secure the structure with the help of an Allen key and the two Allen screws.

Allen Key screws



EV CHARGER INSTALLATION MANUAL

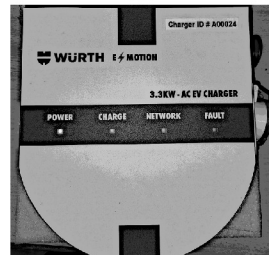
ELECTRICAL

INTRODUCTION

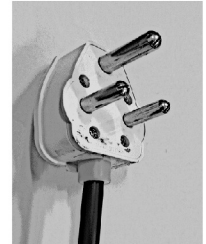
This section contains the procedure to start the EV charging unit.

It also shows the common faults that user may come across and how to troubleshoot them in the absence of a technician.

LIST OF PARTS



EV Charging Unit
(QTY : 1)



16A 3-Pin Plug
(QTY : 1)

STEP1 :

Insert the 16A 3-Pin Plug into a 230V single phase 3-Pin 16A socket.

Installation of a 16A circuit breaker (MCB) is suggested.



STEP2 :

Switch it on and observe the LED indication on the EV Charging unit. All four LEDs will glow for 5 secs. If the Red LED is blinking then it indicates any one of the following faults :

1. Live Neutral Reversed.
2. No Earthing Connection.
3. Emergency Stop Button Pressed.

STEP3 :

Contact Administrator for further mapping.